



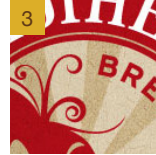
CRUCÉ
www.cruce.com



1



2



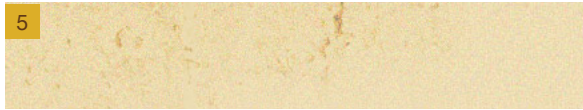
3



4



6



5



Sources:

1. JOPD Photoshoot
2. Sleeman Brewery
3. Mother Earth Brewing
4. Handcrafted CSS
5. Alex Colmen Design
6. Mother Earth Brewing

Sketch Notes:

After research we discovered that many brewery's and beer distributors had a strong focus on the visual of the bottle/can. The design we present in the sketch gives prominence to the big images received in the photoshoot.

The center section is also on a carousel that will rotate with other images. Under the large main image would be smaller "ad" banners for other important sections. This will be useful to draw attention to news/updates, seasonal brews, or more information.

The sub pages will keep a very similar design but will use a much smaller image with content below that image.

